

sightlines

January to June, 2019

The Alberta Foundation for the Arts Travelling Exhibition Program
Region 2 - Northeast and North Central Alberta, Art Gallery of Alberta



Government
of Alberta

Alberta
Foundation
for the Arts

Alberta

asa
art gallery of alberta

Art(ists) Speak Insights into Art: Volume 1

Over the years it's been my pleasure to develop art exhibitions to send out to you; to introduce numerous artists and share various art ideas; and to express my opinions concerning the importance of art and art making. While I've done a lot of 'talking', however, I'm certainly not the only person who has things to say concerning art. Needless to say, there are lots of other people, far more qualified than myself, who have things to share about the subject. For this edition of *sightlines*, then, I've invited others to express their thoughts on the matter - the talented people who actually create the art works which make up the exhibitions sent to you.

Art is total risk, total freedom and the reason why art is important is that without art there is no ritual and without ritual there is no culture and without culture there is no life worth living.

Ruby J. Mah



Ruby J. Mah
Flamingoes and Mustard both Bite, 2011
Collection of the Artist



Pam Wilman
Mount Ward, 2007
Collection of the Artist

I started painting when I was a teenager. It enthralled me that there was something I was good at and I enjoyed the process for all its successes and failures. It's comforting that there's a place in the world for art as a vehicle for human expression.

David Shkolny

The challenge is to find my emotional response to the landscape. I am interested in the loss of habitat and the protection of wild spaces in Alberta. I paint to focus and be in the moment, while observing the changing elements of the landscape.

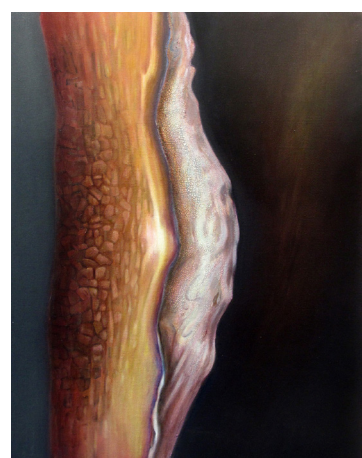
Pam Wilman



David Shkolny
Pond Life, 2014
Private Collection

I see art and art making as an attempt to find commonality.

Pamela Thurston



Pamela Thurston
Time Heals, 2012
Collection of the artist



Jude Griebel
Burning down the empty house, 2007
Collection of the Artist

Art making allows me to reflect on my life within an increasingly challenging and unstable world. Spending time with the artwork of others allows us the privilege of accessing perspectives and stories outside of our own, creating empathy and more accepting and supportive communities.

Jude Griebel

The creation and consumption of art stimulates our most refined intellectual & cerebral faculties. It is one of the rare activities that allows us to transcend the primitive passions of our reptilian brain, and begin to reflect on the world in truly profound ways. As a species we possess a singular quality that allows us to create without utilitarian function, in order to tell stories & comment on our lives. The appreciation and production of art is a unique gift that makes us truly human, and consequently holds a mirror up to confront our sapience... the arts need be continually celebrated!

Darcy Logan



Darcy Logan
When We Play We Grow Wiser, When We Judge We Grow Older, 2016
Collection of the Artist



Diane Duncan
Mom Evelyn, 2016
Collection of the Artist

Art is a language used to translate information from the artist to an audience that is difficult to transmit via the restrictions of language alone. It speaks of emotion, vision, sound and reaction to surroundings and often invokes much more than a verbal response from the audience. Art can incite joy or sorrow, appeal or revulsion, peace or anger, pleasure or pain and one could continue this list. Art is a window into the soul of the artist, providing a glimpse of past and current experiences, emotions, and interests.

Diane Duncan

For me, art is a unique opportunity to communicate, share and build bridges through mediums that can transcend the boundaries of language and culture. It's a pathway to our primal and shared experience of life, and a way to see how deeply connected we can be with each other regardless of our respective backgrounds and differences.

Daniel Beaudin



Daniel Beaudin
Princesses, 2017
Collection of Daniel Beaudin

sightlines is a newsletter from the Art Gallery of Alberta and is published to promote awareness for the Alberta Foundation for the Arts Travelling Exhibition Program. For information contact Shane Golby, Manager/Curator by telephone 780.428.3830 or email shane.golby@youraga.ca

Exhibition Schedule

January to June, 2019

Exhibition	January 24 - February 20	February 28 - April 3	April 11 - May 8	May 16 - June 12
Life Lit Up This exhibition, featuring works from the collection of the Alberta Foundation for the Arts, explores the influence of chiaroscuro and tenebrism on photographers from Alberta. Through their works these artists expose the 'wonder' and beauty of the ordinary. Curated by Shane Golby, Art Gallery of Alberta	Rideau Park School 10605-42 Ave., Edmonton Contact: Jane Zaiane Ph: 780-437-0010	Richard Fowler CJHS 65 Sir Winston Churchill Ave., St. Albert Contact: Brent Kieser Ph: 780-459-2644	Slave Lake Library 50 Main Street SW Slave Lake Contact: Kendra McRee 780-849-5250	Belgravia Elementary School 11605-74 Ave., Edmonton Contact: Brent Irving Ph: 780-435-5560
Re-Imaging Normal Combining archival materials with art works created by LGBTQ+ and LGBTQ-allied artists, this exhibition allows peoples' own stories to be told, creating a space for dialogue between different communities so that the boundaries of what is considered 'normal' are questioned and possibly expanded. Curated by Michelle Lavoie and Shane Golby, Art Gallery of Alberta	Archbishop MacDonald High School 14219-109 Ave., Edmonton Contact: Jonathan Eschak Ph: 780-451-1470	Chuck Maclean Arts Centre 4809-52 Street Camrose Contact: Jane Cherry-Lemure Ph: 780-672-9949	Lacombe Memorial Centre 5214-50 Ave., Lacombe Contact: Maureen MacKenzie Ph: 1-403-782-1258	Eastglen High School 11430-68 Street Edmonton Contact: Christina Hamer Ph: 780-908-0617
Plate Tectonics The exhibition Plate Tectonics explores the enduring legacy of the landscape genre in Alberta. This exhibition investigates both the physical topography of Alberta as well as the different stylistic approaches and intents expressed by five landscape artists in the province. Curated by Shane Golby, Art Gallery of Alberta	Caslan School 4903-50 Ave., Caslan Contact: Candis Kurasevich Ph: 780-689-2118	Mother Margaret Mary School 2010 Leger Road Edmonton Contact: Denise Gulli Ph: 780-988-2279	Stuart Macpherson Library 8702-91 Ave., Bold Centre Lac la Biche Contact: Kristy Arsenault Ph: 780-623-6385	Onoway Elementary School 5708 Lac St. Anne Trail North Onoway Contact: Twyla Lesko Ph: 780-967-5209
Cattle Call Featuring works from the collection of the Alberta Foundation for the Arts, this exhibition focuses on cattle as they have been expressed by artists throughout Alberta. The presented art works portray 'the cow' both as an essential feature of Alberta's economy and way of life and also as a cherished companion. Curated by Shane Golby, Art Gallery of Alberta	Travelling TREX Region 3 Alberta Society of Artists	Two Hills School 4806-51 Ave., Two Hills Contact: Mirela Olah Ph: 780-657-3383	Lakedell School RR#1 Westeros Contact: Donald Teplyske Ph: 780-586-2415	High Park School 40 Highridge Way Stony Plain Contact: Amy Collett Ph: 780-963-2222
Aakii isskská'takssin (Woman - thought) This photography series is designed to expand the interpretation of story within contemporary art practice of artists with Blackfoot heritage. The work of the featured artists aims to foster a deeper awareness of the complexities of Indigenous identity. Curated by Jennifer Bowen and organized by the Art Gallery of Alberta. Syncrude	Beaumont Public Library 5700-49 Street Beaumont Contact: Martin Walters Ph: 780-929-2665	Spruce Grove Public Library 35-5 Ave., Spruce Grove Contact: Tammy Svenningsen Ph: 780-962-4423	Dow Centennial Centre 8700-84 Street Fort Saskatchewan Contact: Terri Ponich Ph: 780-992-6406	Hilltop High School 71 Sunset Blvd., Whitecourt Contact: Katrina Zack Ph: 780-778-2446
Rain Dance The ebb and flow of rain operates as a cyclical dance between scarcity at one extreme and overabundance at the other. When the cycle is in balance, we prosper: when it isn't, we suffer. The works selected for this exhibition illustrate moments within this perpetual cycle. Curated by Shannon Bingeman, Alberta Society of Artists	Christina Gordon School 106 Parsons Creek Drive Fort McMurray Contact: Gavin Rutledge Ph: 587-276-2017	Retires, TREX Region 3 Alberta Society of Artists		
A Woman Walking (the City Limits) In this exhibition artist Alana Bartol used walking as a medium to explore the city limits of Calgary. Along the way, she collected found objects, recorded video, and captured photographs which reveal the traces of the inhabitants who occupy or have occupied these liminal spaces. Curated by Shannon Bingeman, Alberta Society of Artists	Multicultural Heritage Centre 5411-51 Street Stony Plain Contact: Lucille Frost Ph: 780-963-2777	Moves to TREX Region 4 Esplanade Arts and Heritage Centre		
Life on Earthenware In this exhibition artist Annette ten Cate has created sculptures which present animals in familiar human contexts. Through such work she hopes to elicit compassion and a renewed understanding of each species. Curated by Shannon Bingeman, Alberta Society of Artists	Travelling TREX Region 2 Esplanade Arts and Heritage Centre	W.P. Wagner School 6310 Wagner Road, NW Edmonton Contact: Kathy Kulpa Ph: 780-469-1315	Richard Fowler CJHS 65 Sir Winston Churchill Ave., St. Albert Contact: Brent Kieser Ph: 780-459-2644	Onoway Public Library 4708 Lac Ste. Anne Trail North Onoway Contact: Kelly Huxley Ph: 780-967-2445
1.6 Million Miles a Day This exhibition features videos and photographs by artist Dan Hudson. The works presented address both linear and cyclical aspects of time, provoking the viewer to contemplate observation and memory and how we relate to each other and the world around us. Curated by Xanthe Isbister, Esplanade Arts and Heritage Centre	Belgravia Elementary School 11605-74 Ave., Edmonton Contact: Brent Irving Ph: 780-435-5560	Retires, TREX Region 4 Esplanade Arts and Heritage Centre		
Abstractland This exhibition features a selection of twenty oil paintings by Les Graff, and spans four decades of the artist's prolific career. The paintings, which he refers to as "oil studies," were produced on location in various settings around Alberta: mountains, prairies, lakes and farmland. Curated by Xanthe Isbister, Esplanade Arts and Heritage Centre	Concordia University of Edmonton 7128 Ada Blvd., Edmonton Contact: Jan Mutch Ph: 780-479-9334	Retires, TREX Region 4 Esplanade Arts and Heritage Centre		
Mittinism and the Quest for Empathy This exhibition features a recent acquisition by the Alberta Foundation for the Arts of etchings and lithography prints by artist Rita McKeough which use inanimate objects to explore the complex emotion of empathy. Curated by Xanthe Isbister, Esplanade Arts and Heritage Centre	Afton School of the Arts 16604-91 Ave, Edmonton Contact: Jacqueline Richmond Ph: 780-484-3263	Moves to TREX Region 1 Art Gallery of Grande Prairie		
Into the Badlands This exhibition features works from the Canadian Badlands Artist Association in Drumheller. Participating artists visually express unique aspects of the badlands region from a 'personal' perspective. Curated by Xanthe Isbister, Esplanade Arts and Heritage Centre	Travelling TREX Region 1 Art Gallery of Grande Prairie	Ardmore School 4801-48 Ave., Ardmore Contact: Evelyn Bourbeau Ph: 1-780-826-5144	Alix Mac School 4723-40 Street Alix Contact: Tammy Shapka Ph: 403-747-2778	Ronald Harvey Elementary School 15 Langley Ave., St. Albert Contact: Zena Harris 780-459-5541
Water: Creation and Capture This exhibition explores exchanges between the material environment and the water that flows through it. The works in this exhibition present an exchange between captured moments in the flow, measured precision, and the openness of interpretive impact. Curated by Todd Schaber, Art Gallery of Grande Prairie	Leduc Public Library #2 Alexandra Park Leduc Contact: Linda McLean Ph: 780-986-2638	Moves to TREX Region 3 Alberta Society of Artists		
Building Stories Vol. 2 This exhibition presents the work of 15 artists whose depictions of buildings tell stories from their own personal experiences and observations. Curated by Todd Schaber, Art Gallery of Grande Prairie	Travelling TREX Region 3 Alberta Society of Artists	H.W. Pickup School 3505-58 Ave., Drayton Valley Contact: Scott Kupsch Ph: 780-542-4495	Barrhead Public Library 5103-53 Ave., Barrhead Contact: Elaine Dickie Ph: 780-674-8519	Rideau Park School 10605-42 Ave., Edmonton Contact: Jane Zaiane Ph: 780-437-0010